

HOME AND LAND

Domaine homes



HOME SIZE: 163.5M²

LAND SIZE: 720M²

3 1 2 2

\$685,900*

MANA 17 DELTA FACADE

Lot 113 Condor Close, Singleton, The Fairways Estate

HOUSE AND LAND PACKAGE INCLUSIONS

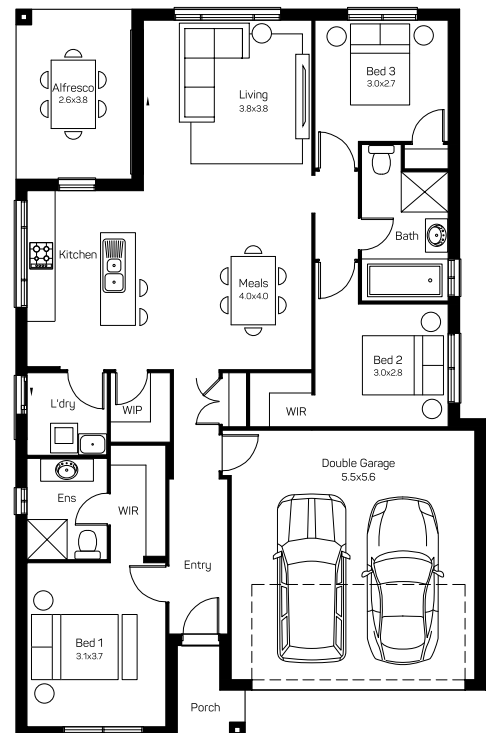
- Lifetime Structural Guarantee
- Hybrid steel frame
- Floor coverings
- 20mm stone kitchen benchtop
- Flyscreens to opening windows
- Haier kitchen appliances
- Fully Ducted Air Conditioning
- Soft close drawers and doors to kitchen and bathroom
- 3.5kW Solar Package
- And much, much more...



THE FAIRWAYS

SINGLETON

Domaine Homes | contact@domainehomes.com.au | 13 64 69



*Facade image may depict features not included in the package prices shown such as render, tiling, lighting, roof covering, timber decking and landscaping. Plans are subject to approval by the Principal Developer and Local Authorities. Domaine Homes NSW reserves the right to withdraw or alter this package at any time without notice. Allowance for site costs included. Pricing is subject to change without notice. Domaine Homes NSW is not the owner of the land and is not responsible for final site dimensions or registration times. All information given at this time is believed to be correct.