

Legend

- Subject Site
- Building Envelope
- 10-15m Landscape Buffer
- 100m Buffer
- 25m APZ
- 16m APZ
- 12m APZ
- 10m APZ
- 5m APZ
- Coastal Grassy Woodland
- Freshwater Wetland
- Grassland
- Managed Land
- BAL FZ
- BAL 40
- BAL 29
- BAL 19
- BAL 12.5

Disclaimer
The BALS as depicted on this map have been determined by vegetation within 100m of the site at the time of the assessment in February 2025. It should be noted that conditions may change over time, that may result in different BALS for the site. Although every care has been taken in the preparation of this map the author accepts no responsibility for any misprints, errors, omissions, inaccuracies in these maps or damages resulting from the use of this information.

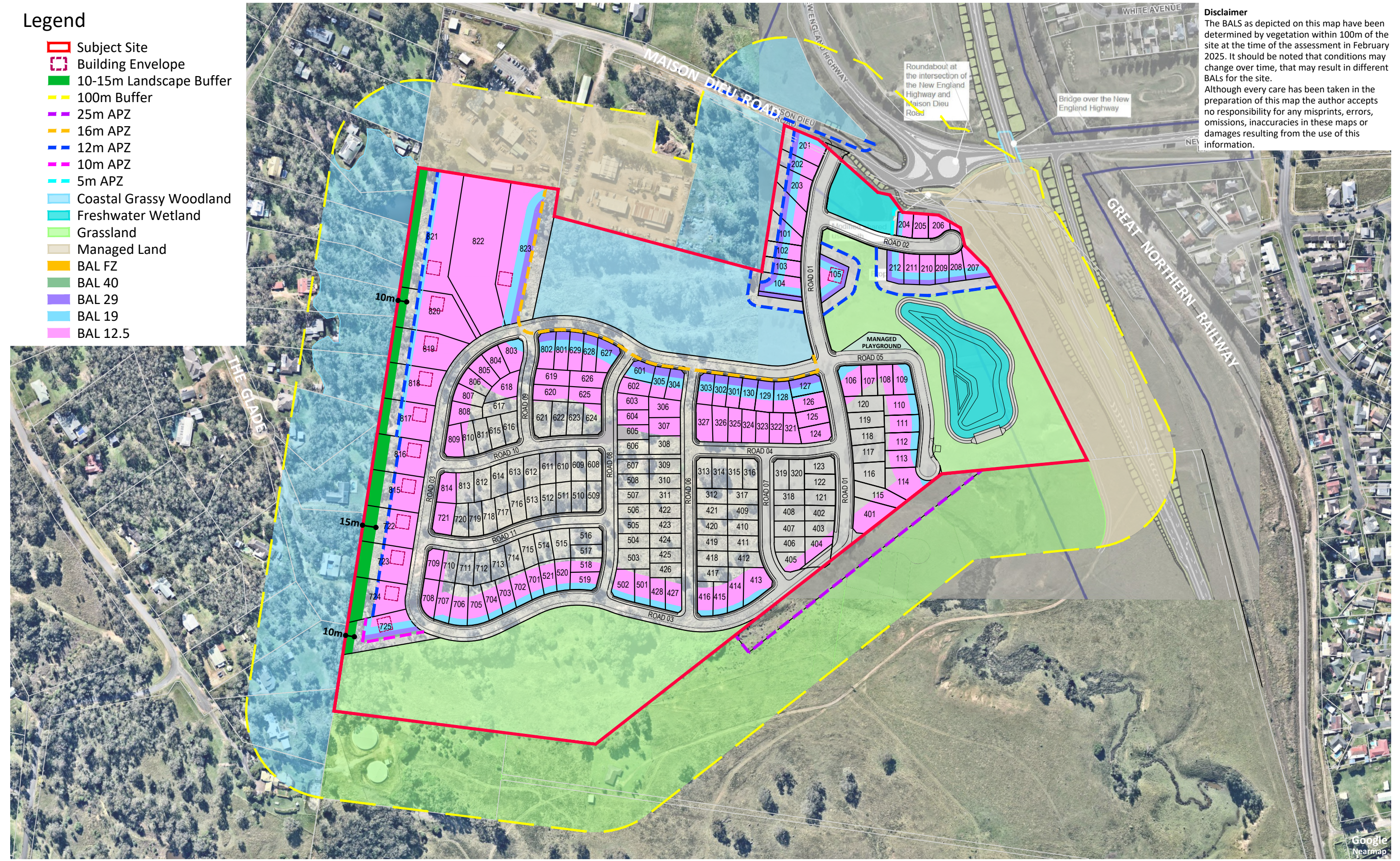
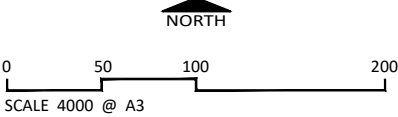


FIGURE 5-1: BUSHFIRE ATTACK LEVELS

CLIENT
SITE DETAILS
DATE

McCloy Group Pty Ltd
Gowrie / Singleton
7 February 2025



Firebird ecoSultants Pty Ltd
ABN - 16 105 985 993
Level 1, 146 Hunter Street, Newcastle NSW 2300
P O Box 354 Newcastle NSW 2300



DISCLAIMER
This document and the information shown shall remain the property of Firebird ecoSultants Pty Ltd. The document may only be used for the purpose for which it was supplied and in accordance with the terms of engagement for the commission. Unauthorised use of this document in any way is prohibited.